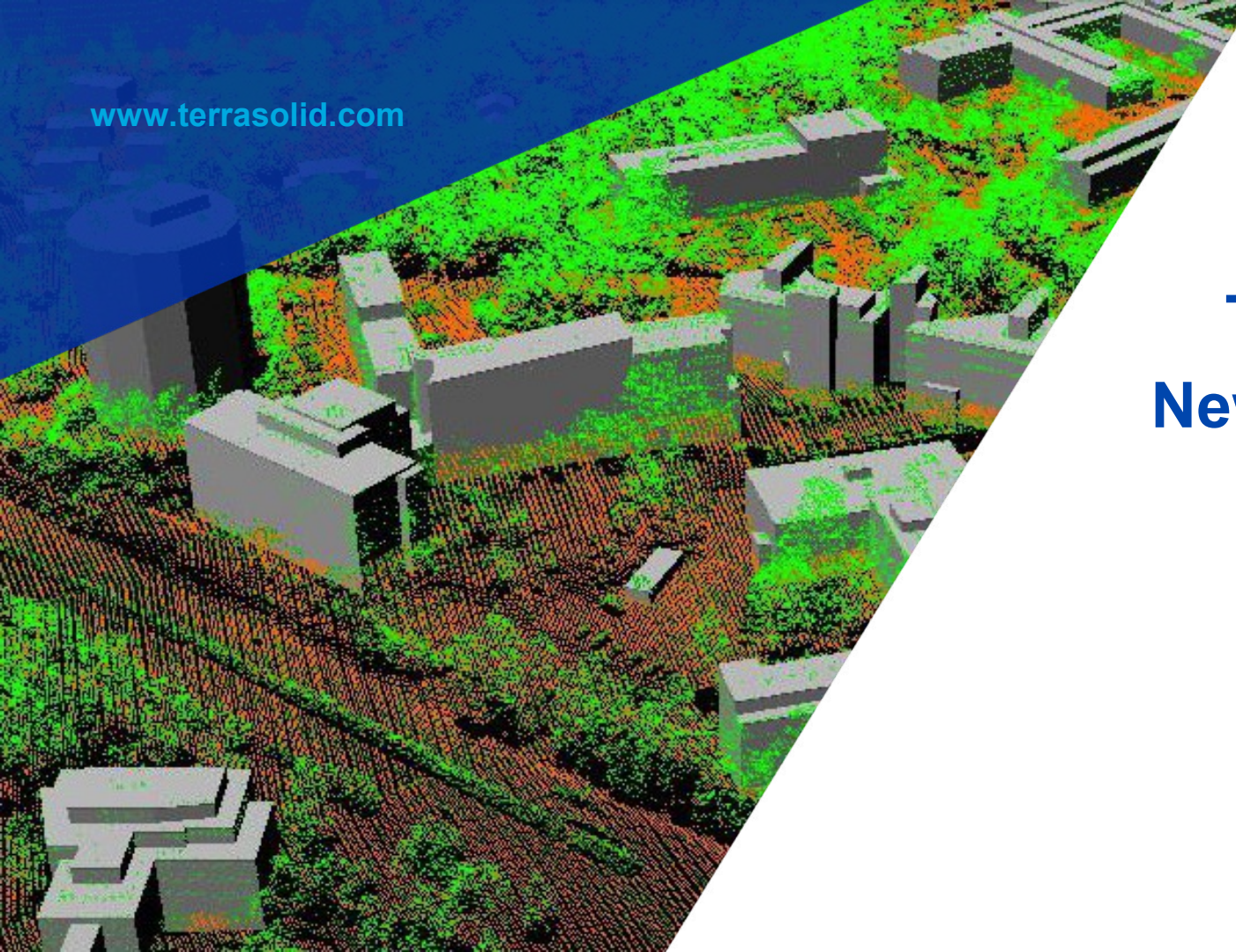


[www.terrasolid.com](http://www.terrasolid.com)



# TerraPhoto New Features

Arttu Soininen 03.02.2016



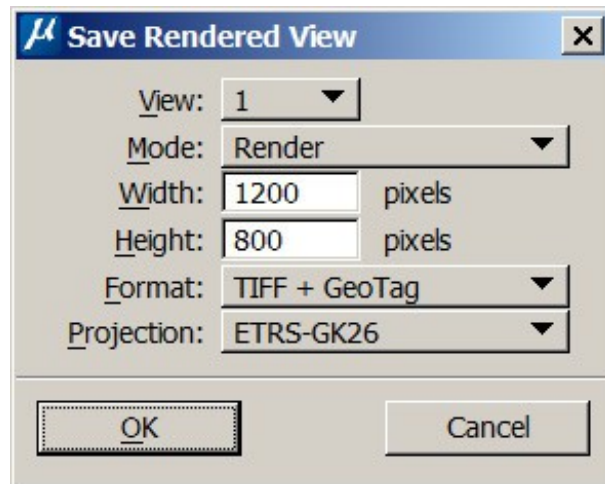


## Various Improvements

- **Set Accuracy** menu command for setting accuracy estimates of trajectory positions
- Support for LAZ as project storage format

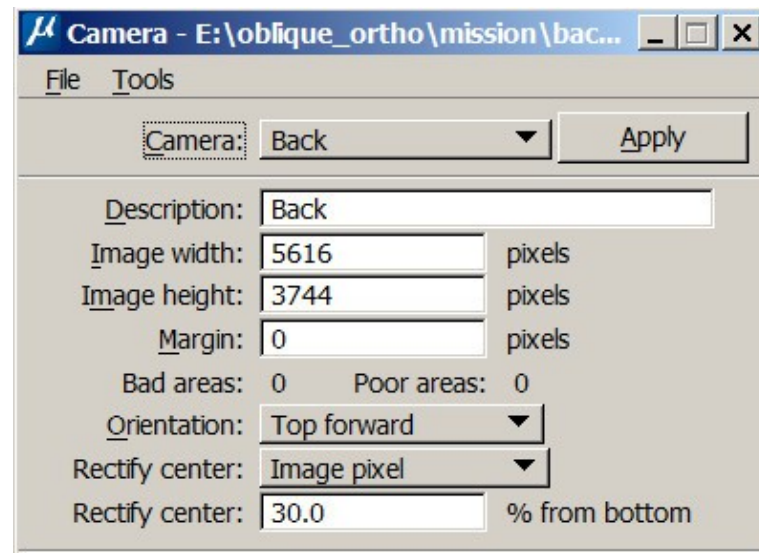
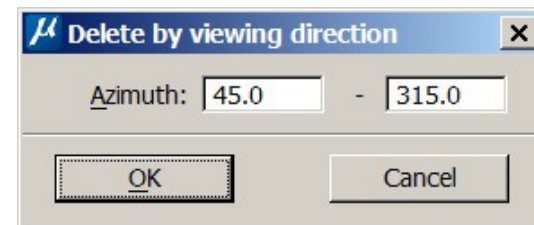
# Google Earth Export

- **Save Rendered View** can write geotags into output TIFF files
  - Perspective view: longitude & latitude of viewer position
  - Orthographic views: longitude & latitude of view center point
- Use free utility such as GeoSetter to package TIFF files into KML for Google Earth
- Use case:
  - Capture desired views at danger tree locations
  - Package into KML



## Improvements for Oblique Ortho Production

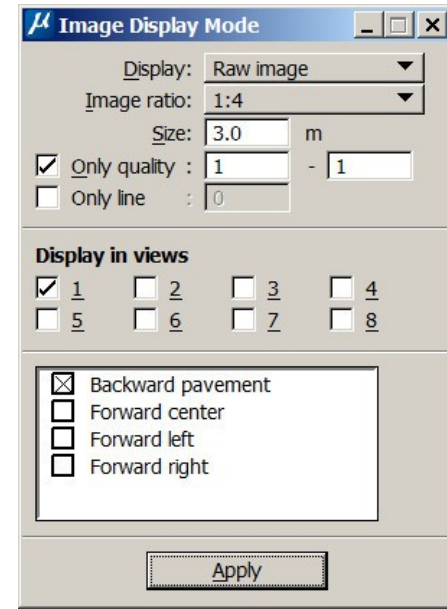
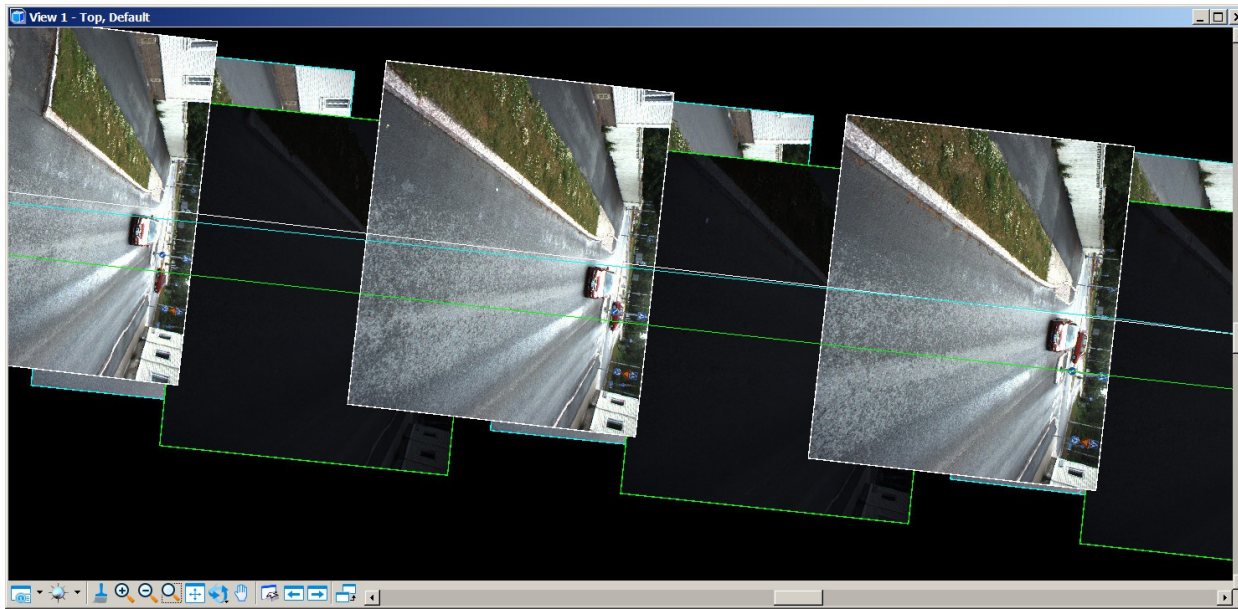
- **Delete / By viewing direction** menu command for deleting images by viewing direction
  - Good for keeping only north/south/west/east looking images
- **Rectify center** setting in **Define Camera** lets you specify what position is regarded as best for orthophoto
  - Changes location of seamlines, good to avoid image edges as seamlines





## Viewing raw images and setting quality

- **View / Display mode** command specifies how to display raw images in views
- **Set Image Quality** tool changes quality values of images
- View images from different passes and decide which are lower visual quality
- Better quality images will be used in coloring points or ortho production





## Wall Textures & Mobile Images

- First support for texturing walls using mobile images
- **Rectify / Rectify walls** can use mobile images
- No seamline editing – result is good when one image sees entire wall surface

## Constant Color in Change Texture Image

- Fills texture with constant color
- Constant color can be best when all images are obstructed by foreground objects

