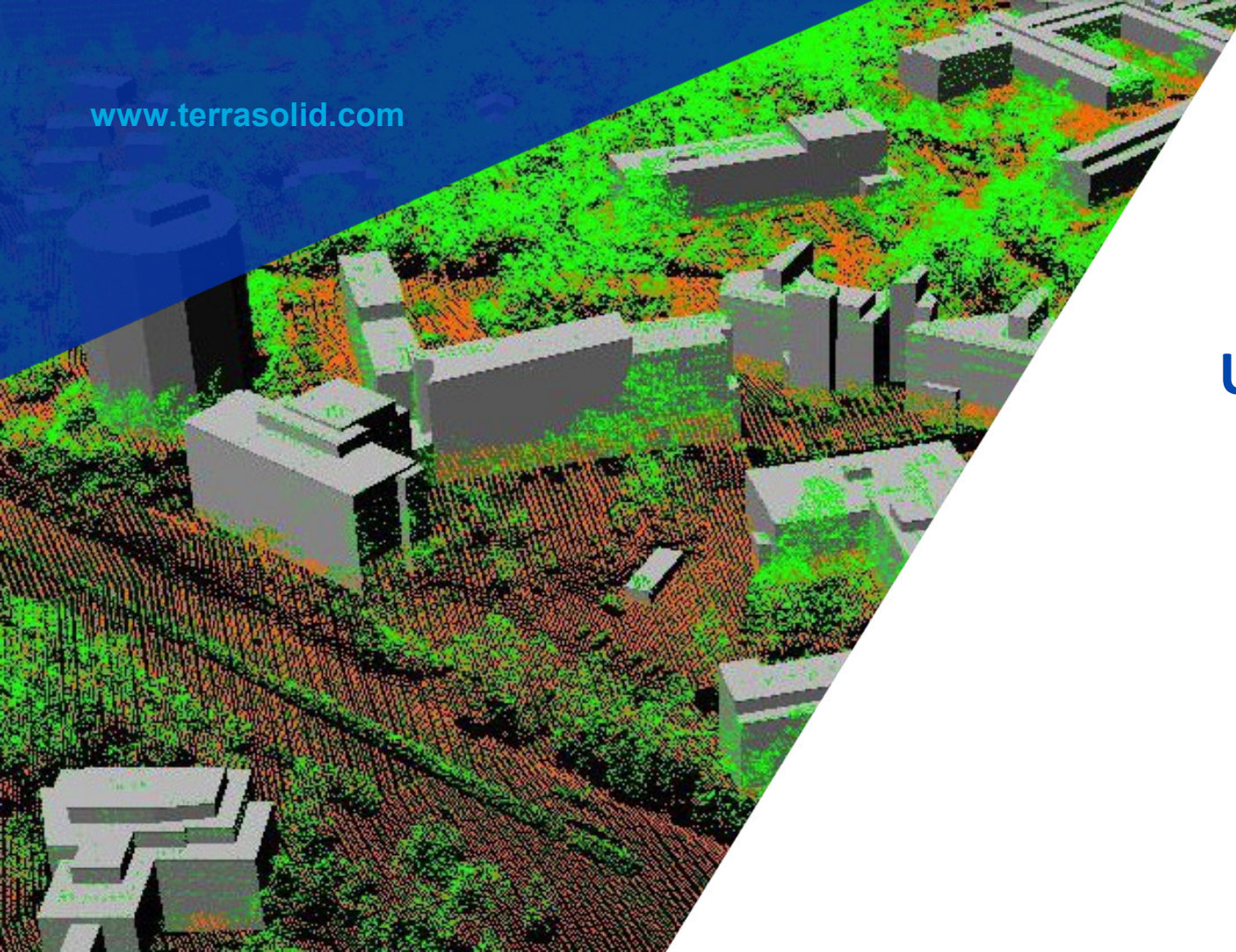


www.terrasolid.com



UAV Versions

Arttu Soininen 26.09.2017



UAV Versions



- Lower price level software packages suitable for processing UAV point clouds and images
- Available starting 26.09.2017
- Available as bundles only:

TerraScan UAV + TerraModeler UAV	4 600 €
TerraScan UAV + TerraPhoto UAV	5 500 €
TerraScan UAV + TerraMatch UAV	5 500 €
TerraScan UAV + TerraMatch UAV + TerraModeler UAV	6 500 €
TerraScan UAV + TerraPhoto UAV + TerraModeler UAV	6 500 €
TerraScan UAV + TerraMatch UAV + TerraPhoto UAV + TerraModeler UAV	7 850 €

TerraScan UAV vs Full Version

- UAV version has no project capabilities
- Operations run on points loaded into memory
- No batch processing capabilities such as running macros on project blocks

- UAV version is perfect for processing data sets of upto a few hundred million points
- UAV version can process an occasional large data set (without benefits of batch processing)

- Tools missing: Design Block Boundaries, Define Project, Open block, Open inside fence, Run / On selected files for macros, waveform tools, Fit Geometry Components, Build Paint Line Chains
- Tools without project option: Measure Point Density, Draw Sight Distances, Draw Sign Visibility

TerraMatch UAV vs Full Version

- UAV version has no project capabilities
- Operations run on points loaded into memory
- No batch processing capabilities such as searching tie lines or applying a correction on a project

- UAV version is perfect for processing data sets of upto a few hundred million points
- UAV version can process an occasional large data set (without benefits of batch processing)

- Tools without project option: Find Match, Apply Correction, Find Fluctuations, Match Forward and Backward, Measure Match, Tie lines / Import points, Tie lines / Search tie lines, Tie lines / Search cloud-to-cloud

TerraPhoto UAV vs Full Version



- UAV version limited to airborne images max 500m altitude above ground
- No support for mobile images

- Tools missing: Import Lynx survey, Import Pictometry survey, Transfer images, Blur selected polygons, Import Mitsubishi cameras

TerraModeler UAV vs Full Version

- No tools for batch production of contours, lattice files or TIN models
- No lattice database tools

- UAV version is perfect for processing data sets of upto a few hundred million points
- UAV version can process an occasional large data set (without benefits of batch processing)

- Tools missing: Domain tools, Region tools, Lattice database tools, Display Themes, Display Region Triangles, Produce contours, Produce lattice model, Produce triangles