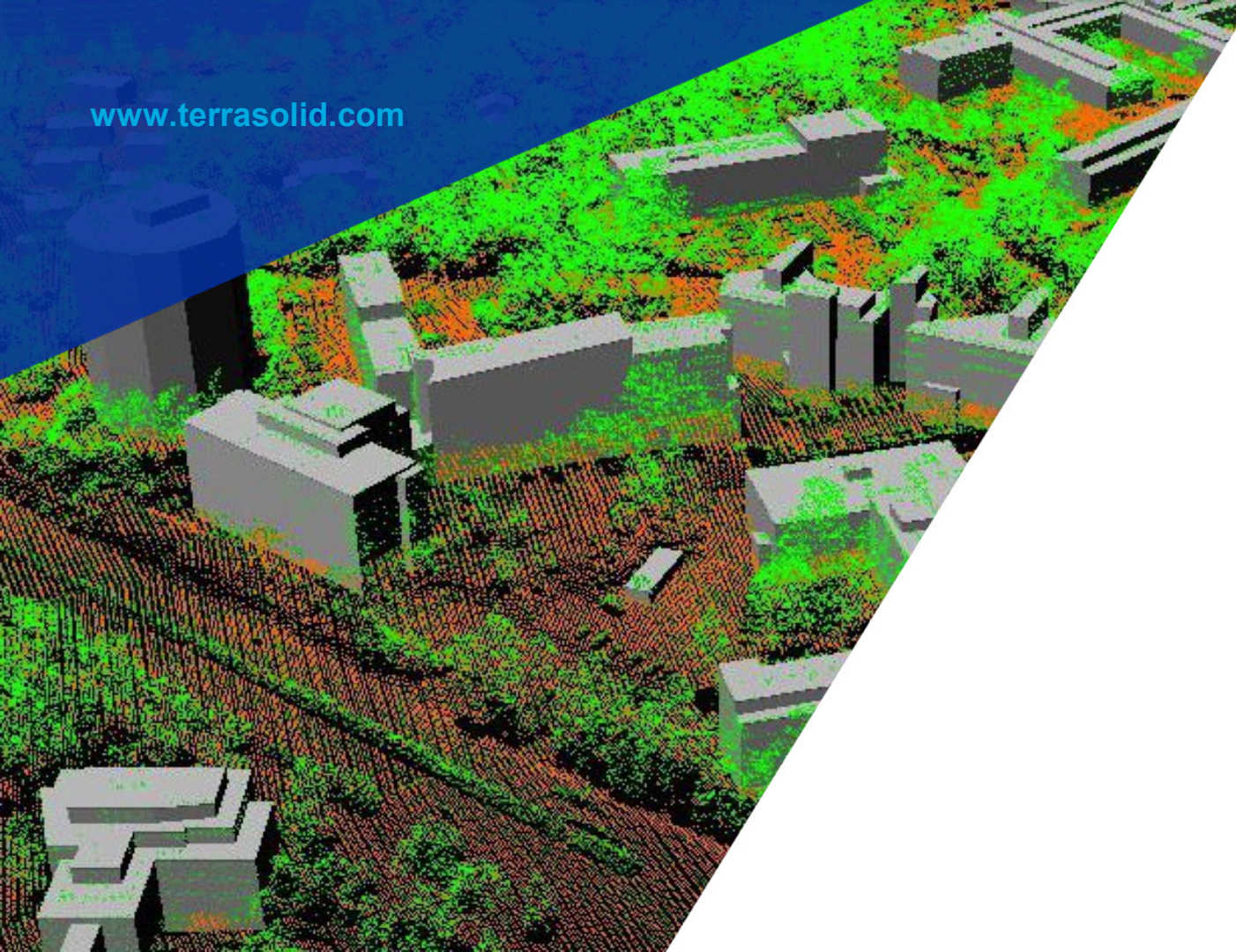


www.terrasolid.com



TerraModeler New Features

Arttu Soininen 23.01.2018



Points On Surface Keyin Command

- Keyin command for **Points On Surface** tool
- Changes **View Elevation** tool mode (active/inactive and dz)
- Example keyin commands:
 - `Points On Surface on=0`
 - `Points On Surface on=1/dz=0.0`
 - `Points On Surface on=1/dz=2.0`

Earth Tones Scheme in Display Shaded Surface

- Builtin coloring scheme added

